



WaterFurnace®
Smarter from the Ground Up™

Geothermal Comfort Systems

All the Comforts of Home

RESIDENTIAL PRODUCT LINE





Smarter from the Ground Up™

Heat & cool your home the smart way

WaterFurnace geothermal systems use the solar energy stored just below the earth's surface to provide exceptional comfort and reduced operating costs—without burning fossil fuels. Unlike other renewable technologies, geothermal doesn't rely on external conditions. It provides renewable benefits 24 hours a day, day or night, rain or shine. That's why more and more people are switching to geothermal—the “Reliable Renewable.” Take a closer look to find out how WaterFurnace geothermal systems are “Smarter from the Ground Up.”

Our purpose is to transform the way we use energy, protect resources for future generations and give people the freedom to focus on life.



THE RELIABLE
RENEWABLE™

Comfort that gives back

Geothermal's benefits

Geothermal heat pumps are not only the most comfortable way to heat and cool, they're also the most cost effective. They're versatile enough to excel in almost any home or any environment, and you'll find geothermal in more than 1 million households across Canada and all 50 U.S. states. They can be scaled for single-family homes to entire college campuses. In fact, we heat and cool our entire 110,000 square-foot headquarters with WaterFurnace equipment. Here are a few reasons why geothermal is one of the fastest growing technologies available for your home.

QUALIFIES✓
GEO TAX CREDIT

30%

Extra savings for geothermal

A 30% tax credit on equipment and installation costs is currently available to U.S. homeowners who install an ENERGY STAR rated geothermal system. The credit can be used to offset both AMT and regular income taxes and can be carried forward into future years. The 30% tax credit will last until the end of 2032 when it is scheduled to decrease to 26% in 2033 and 22% in 2034. Hurry and act now for the most savings!



Energy Efficient

The best ordinary systems deliver less than one unit of energy for every unit they consume. But many WaterFurnace systems can deliver five or more units of energy for every one unit of electrical energy used. That translates into an efficiency rating exceeding 530%, while the most efficient gas furnace which rates only 98%.



Comfortable

WaterFurnace units are designed to run more often at low speeds to provide stable temperatures throughout the home and help eliminate hot or cold spots. This is especially true with variable capacity units. They provide a comfort you need to experience to believe. To achieve precise control over temperatures in up to 6 areas, add our IntelliZone2 zoning system.



Cost Effective

Because of the extraordinary efficiency of a WaterFurnace system, most homeowners save more on monthly bills than they pay for the system when installation costs are added to the mortgage. Any added investment over traditional equipment is usually recovered in just a few years, and many homeowners see a return on investment of 10-20% over the life of the system.



Quiet

WaterFurnace systems don't require noisy outdoor units that can disturb your peaceful surroundings. And, we've engineered the indoor system to be as quiet as possible. Since it runs at lower speeds more consistently, the amount of noise coming from the unit is minimal.



The Latest Low GWP Refrigerant

Geothermal systems are recognized by the United States Environmental Protection Agency as the most environmentally friendly, cost effective and energy efficient heating and cooling technology available. And now our systems utilize a low GWP (global warming potential) refrigerant R-454B. These systems also minimize the threats of acid rain, air pollution, the greenhouse effect and global warming—problems directly linked to the burning of fossil fuels. In fact, installing a single geothermal unit is the environmental equivalent of planting 750 trees or removing two cars from the road.



Reliable

Geothermal units aren't subjected to the punishing effects of outdoor weather or fuel combustion, so they last longer than nearly any other heating and cooling system. According to the American Society of Heating, Refrigerating, and Air Conditioning Engineers, geothermal units have an average equipment life of 25 years while the underground loop system has a rated material life of more than 100 years. Ordinary air conditioners, furnaces and heat pumps are rated for only 12-18 years.



Clean Air

WaterFurnace units circulate air more often, which naturally filters the air. Many units also come standard with large, high efficiency MERV 11 filters to provide exceptional indoor air quality and protect your family from dust and pollen.



Flexible

Package systems are available that provide heating, central air conditioning, and supplemental domestic hot water for your entire home in an all-in-one unit. For homeowners with less utility space, WaterFurnace also offers split units. Horizontal, vertical and bottom-flow configurations are available for a wide range of residential applications, including newly constructed as well as existing homes.



Safe

Because natural gas, propane, or oil isn't required to operate a WaterFurnace system, there's no combustion flames or fumes, and no chance of carbon monoxide poisoning.



Less Obtrusive

WaterFurnace systems don't require conspicuous wall-mounted equipment or outdoor units that create unsightly additions to your home's appearance.

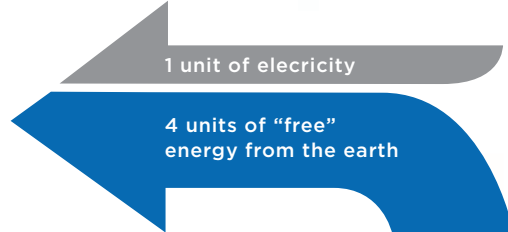
A system for every home

Product selection

Your home's comfort is important to you and your family. You want a comfort system that will provide you with peace of mind and low operating costs for many years.

This brochure highlights our extensive residential product line. We've included descriptions of the products, features and applications along with a side by side comparison. Although all WaterFurnace products are designed and built to the highest standards, each group of products is unique in its own way. Therefore, we've included a 5-star rating system for each group to clearly demonstrate a "Best, Better, Good" rating based on overall efficiency, performance, features and application flexibility.

5 Series units deliver an astounding five dollars of energy for every dollar of electrical energy used while 7 Series units deliver even more.



Forced Air Units



7 SERIES® 700A11
Variable Speed All-In-One Unit
Overall efficiency, performance & features: ★★★★★

47.0 EER / 5.2 COP

The 700A11 represents the best of the best. It delivers premium comfort and performance using variable-speed technology. In fact, the 700A11 was the first to offer variable capacity in a residential geothermal unit and utilizes our all-aluminum PinnaCoil®. Our variable speed system adjusts to the exact heating or cooling level needed, offering greater efficiency and comfort compared to ordinary units with fixed speeds.

Plus, with our OptiDry® integrated reheat coil dehumidification technology, your system can provide best-in-class whole-house humidity control without a separate, space-eating unit or additional wiring, electrical circuits, ductwork, or thermostats.

Zoning is not available with OptiDry®.



5 SERIES® 500A11
Dual Capacity All-in-One Unit
Overall efficiency, performance & features: ★★★★

30.0 EER / 5.0 COP

The 5 Series 500A11 provides forced air heating, air conditioning, and even generates a portion of your home's hot water—all from a single unit. You'll experience a level of comfort and savings that's far greater than any ordinary system without the risks of utilizing fossil fuels. The 5 Series represents some of our highest efficiencies and is available in a range of sizes and configurations to allow convenient installation in any home. No matter what climate you live in, your WaterFurnace system will deliver.



3 SERIES® 300A11
Dual Capacity All-in-One Unit
Overall efficiency, performance & features: ★★★

22.4 EER / 4.3 COP

Performance meets value with the 300A11. This system represent the culmination of 30 years of research, engineering, and manufacturing experience to give you incredible comfort at a great price point. From this one interior unit, you'll get forced air heating and air conditioning, as well as a portion of your home's hot water. Plus, you'll save energy with the dual capacity design that adjusts depending on your home's needs. And you won't have to worry about durability—the 300A11 features an all-aluminum air coil, providing peace of mind for years to come.

The most efficient way

All WaterFurnace ENERGY STAR units are recognized as ENERGY STAR Most Efficient for 2025, representing cutting edge efficiency and the latest in technological innovation.



Proudly committed to high industry standards

Most WaterFurnace products proudly meet the standards for these certifications. They demonstrate our commitment to conservation, performance and safety.



Hydronic Units



5 SERIES® 504W11
OptiHeat Water-to-Water Hydronic Unit
Overall efficiency, performance & features: ★★★★★

16.1 EER / 3.3 COP

The 504W11 is a single-stage hydronic geothermal heat pump that's used for high temperature water-to-water applications. It's ideal for boiler replacement, especially with baseboard or cast iron radiation heating—or radiant floor applications. OptiHeat vapor injection technology utilizes an additional heat exchanger to divert excess heat and reinject it into the system, making it incredibly efficient. For those who have large hot water demands, using a 504W11 is up to four times more efficient than an ordinary water heater.



5 Series® 500W11
Water-to-Water Hydronic Unit
Overall efficiency, performance & features: ★★★★★½

16.1 EER / 3.1 COP

The 500W11 single-stage hydronic heat pump is a perfect add-on for homeowners needing high volume or dedicated hot water for radiant floors, spa/pools or snow melt. With this geothermal solution, your hot water bills can go down by about 60% per year.



5 Series® Dual Hydronic
Large Water-to-Water Hydronic Unit
Overall efficiency, performance & features: ★★★★★

18.1 EER / 3.3 COP

5 Series Dual Hydronic is designed to meet the high-volume water demands of today's larger luxury homes. 5 Series Dual Hydronic units provide high-capacity heating and cooling performance but still deliver the features homeowners have come to expect from our Envision line. Two high-efficiency single speed scroll compressors keep operating costs low for pool/spa heating, radiant floor, snow melt, aquaculture and process water installations.

Note: A secondary heat exchanger is needed for domestic hot water and pool/spa heating.

Forced Air/Hydronic Combo Unit



5 Series® 3D
Dual Capacity Combo Unit
Overall efficiency, performance & features: ★★★★★

27.8 EER / 4.7 COP

With the 5 Series 3D, you get the best of both worlds: the convenience of forced air heating and cooling with the comfort of radiant floor heat—all in a single unit. The system will provide radiant heat to basement and bathroom floors and cool and heat the rest of your home with forced air using dual-capacity scroll compressors for unmatched efficiency. With hot water assist, the 5 Series 3D can determine when there is excess heat available to route to the hot water heater. This allows you to utilize heat in the most efficient way possible. In fact, in cooling mode, waste heat is recovered and hot water is free.

Crossover Heat Pump



5 Series® and Geo-Ready® Split
Dual Capacity Crossover Unit
Overall efficiency, performance & features: ★★★★★

12.6 EER / 2.98 COP

The 5 Series Geo-Ready Split is an innovative crossover heat pump (CHP) that acts as an air source heat pump initially at installation and can then be switched to a geothermal heat pump at a later date. It bridges the gap for homeowners who want to switch to geothermal but need an immediate replacement while they schedule their loop installation, offering a geothermal solution that's ready when you are.

Split Units



7 SERIES® 700R11 Indoor Split
Variable Capacity Indoor Split Unit
Overall efficiency, performance & features: ★★★★★

40.8 EER / 5.4 COP

The 700R11 takes everything you love from the 700A11 and gives it more flexibility with its split design. WaterFurnace's variable speed innovations are put on display in this top-of-the-line unit, which gives you power, comfort and efficiency. The 700R11 combines with the W7B Air Handler to provide heating, cooling and hot water to the whole house. And because the system is constantly adjusting based on your home's needs, energy won't be wasted and it will always feel just right.



5 SERIES® 500R11 Indoor Split
Indoor Split Unit
Overall efficiency, performance & features: ★★★★★

27.8 EER / 4.6 COP

The 500R11 is an indoor split unit that helps accommodate spaces where all-in-one systems would be difficult to install, like attics or crawl spaces. When connected to our W5B Air Handler the unit can efficiently heat and cool your entire home and even provide some of its hot water. When combined with a fossil fuel furnace, the system automatically selects the most efficient fuel source for your home regardless of outside temperatures. Because there is no outdoor fan like ordinary air conditioners or heat pumps, the unit is extremely quiet.



5 SERIES® 500RO11 Outdoor Split
Outdoor Split Unit
Overall efficiency, performance & features: ★★★★★

27.8 EER / 4.6 COP

Free up space in your home while still reaping all of geothermal's benefits with the 500RO11 outdoor split. In most homes, the unit is paired with WaterFurnace's W5B Air Handler for all-geothermal operation. In extremely cold climates, the unit can also be paired with a fossil fuel furnace for "dual fuel" operation. The 500RO11 will use geothermal in most situations but can boost heat output during stretches of particularly cold temperatures using your existing furnace.

The heart of a geothermal system

Geothermal earth loops

A geothermal system uses a series of underground pipes called a “loop.” The earth loop eliminates the need for fossil fuels. It’s the heart of a geothermal system and its biggest advantage over ordinary heating and cooling technologies. The type of loop used is based on available land space and installation costs for specific areas.



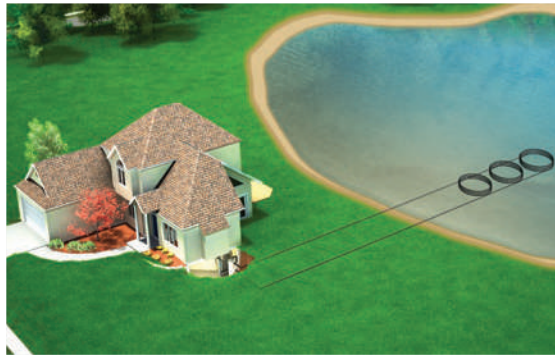
Horizontal Loop

Used where adequate land is available, horizontal loops involve one or more trenches that are dug using a backhoe or chain trencher. High density polyethylene pipes are inserted, and the trenches are backfilled. A typical home requires 1/4 to 3/4 of an acre for the trenches.



Vertical Loop

Vertical loops are used when space is limited. Holes are bored using a drilling rig, and a pair of pipes with special u-bend fittings is inserted into the holes. A typical home requires three to five bores with about a 15-foot separation between the holes.



Pond Loop

If an adequately sized body of water is close to your home, a pond loop can be installed. A series of coiled, closed loops are sunk to the bottom of the body of water. A 1/2 acre, minimum 8-foot deep pond is usually sufficient for the average home.



Open Loop

An open loop is used where there is an abundant supply of quality well water. The well must have enough capacity to provide adequate flow for both domestic use and the WaterFurnace unit. 7 Series units require as low as 3-10 GPM, depending on size.



Directional Bore

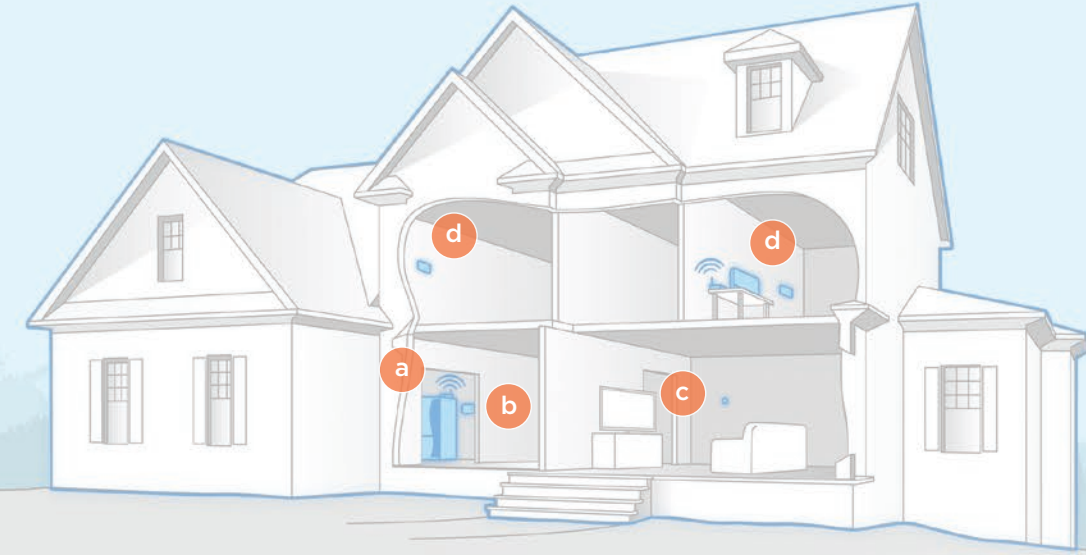
Perfect for homeowners who need minimal landscape disruption, these loop types take advantage of the space available below ground. A directional bore loop can be installed either vertically or horizontally depending on yard space.



Finishing touches

Accessories

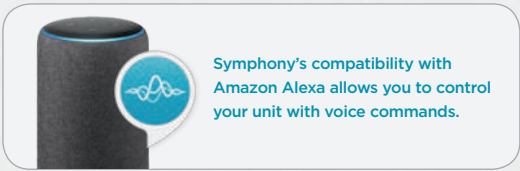
Choosing the right accessories can greatly improve the comfort levels in your home and can even allow you to expand the functions of your existing WaterFurnace system. Each item has been designed to work hand-in-hand with your unit for flawless and convenient operation. Here are some of our most popular accessories. Visit waterfurnace.com for more.



Symphony Web-Enabled Home Comfort Platform

Imagine a platform that lets you control your home's comfort from any web-enabled smart phone, tablet, or computer and can also provide detailed feedback of your comfort system in real-time. That's Symphony! Symphony is a cloud-based platform that connects via Wi-Fi, so there's no software to install. It provides control over the entire geothermal system—not just the temperature as with other 'smart thermostat' systems.

Symphony can also provide peace of mind thanks to its ability to send equipment alerts, service reminders, and notifications to you and your contractor. This means a service tech (through Symphony Contractor Portal) can remotely log into your system to view faults and operating conditions—reducing the need to schedule an in-person service call.

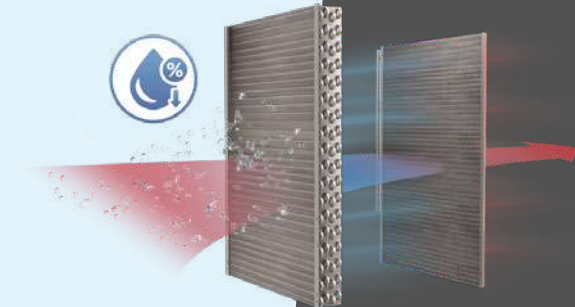


Symphony's compatibility with Amazon Alexa allows you to control your unit with voice commands.



Note: Depending on the control package not all Symphony features may be available.

- a. Aurora WebLink
- b. Symphony Thermostat
- c. Invisible Thermostat Capability
- d. Advanced Zoning System



7 Series with OptiDry

Our 7 Series with OptiDry option offers integrated reheat coil dehumidification technology to provide the new standard in humidity control and comfort without a separate, space-eating unit or unnecessary additional wiring, electrical circuits, ductwork, or thermostats. This best-in-class feature can remove up to 2x the amount of moisture compared to standard whole-house dehumidifiers.



Thermostats

WaterFurnace offers a wide range of programmable thermostat options. All support three heating stages, two cooling stages, as well as auto-changeover, and have an alert system for faults. Touch-screen display, system communication, on-screen energy monitoring, and many other features are available on some models.



IntelliZone2®

The IntelliZone2 allows you to precisely control temperatures in up to four different areas with our dual capacity systems and up to six different areas with our variable capacity equipment. The result is the ultimate in comfort and cost savings. You've already chosen the finest heating and cooling system available; now choose the most advanced zoning system available to control it.

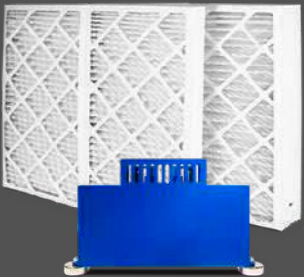
Zoning is not available with OptiDry.

The IntelliZone2 24V option is also available for any WaterFurnace system not equipped with Aurora Advanced (AXB) Controls.



Air Handlers

Our air handlers were engineered specifically for use with a WaterFurnace geothermal system and will provide unmatched compatibility. When combined, our air handlers enable nearly all the benefits of our packaged units with the flexibility of separate components.



Indoor Air Quality

WaterFurnace units use high efficiency MERV filters. For enhanced filtration, our optional AlpinePure Ionization System can increase MERV filter performance by four rating points, which is up to eight times¹ better than a typical MERV 11 filter to better protect your family from dust and pollen.

1. 2009 EPA Tech Paper

| | FORCED AIR UNITS | | | FORCED AIR/HYDRONIC COMBO | DUAL CAPACITY CROSSOVER UNIT | HYDRONIC UNITS | | SPLIT UNITS | | | |
|--|---|--|--|---|---|--|--|--|---|--|--|
| Model | 7 Series 700A11 <i>Available with integrated OptiDry dehumidification (except 2 ton)</i> | 5 Series 500A11 | 3 Series 300A11 | 5 Series 3D | 5 Series 500A11 and Geo-Ready® Split | 5 Series 504W11 | 5 Series 500W11 | 5 Series Dual Hydronic | 7 Series 700R11 Indoor Split | 5 Series 500R11 Indoor Split | 5 Series 500RO11 Outdoor Split |
| Applications | The ultimate in luxury Variable capacity forced air heating and cooling with hot water assist. Optional dehumidification. | Upscale comfort Dual capacity forced air heating and cooling with hot water assist. | A smart choice Dual capacity forced air heating and cooling with hot water assist. | Premium Forced Air + Radiant Hot Water 3-in-1 system. Forced air heating & cooling with capability of radiant floor heat. | Crossover Heat Pump A high efficiency air source heat pump to bridge the gap while customers prepare for a full geothermal system installation. | High temperature hydronic For boiler replacement and hot water applications. | Hydronic Add-on unit for hot water applications like radiant floor, spas, pools, fan coils. | Hydronic Add-on unit for high volume water demands of today's larger luxury homes. Dual compressor operation. | Versatility Used with remote air handler (shown above). | Versatility Used with remote air handler (shown above) or gas furnace. | Outdoor unit Used with remote air handler or gas furnace. |
| Sizes | 2 to 5 ton variable capacity (4 sizes) | 1.5 to 6 ton dual capacity (8 sizes) <i>018 available end of 2024</i> | 2 thru 6 ton dual capacity (5 sizes) | 3 to 6 ton dual capacity (4 sizes) | 3 to 4 - 5 ton dual capacity (3 sizes) | 4 to 5 ton single speed (2 sizes) | 2 to 5 ton (3 sizes) | 10 and 15 ton dual compressor (2 sizes) | 2 1/2 to 4 ton | 2 to 5 1/2 ton dual capacity (5 sizes) | 2 to 5 1/2 ton dual capacity (5 sizes) |
| Efficiency AHRI 13256-1 (GLHP) Closed loop | Part Load | 5.1 - 5.2 COP / 42.0 - 47.0 EER | 4.2 - 5.0 COP / 24.8 - 30.0 EER | 3.9 - 4.3 COP / 20.4 - 22.4 EER | 4.1 - 4.7 COP / 25.0 - 27.8 EER | N/A - Single speed/full load units only | N/A - Single speed/full load units only | 3.2 - 3.3 COP / 16.0 - 18.1 EER | 5.0 - 5.4 COP / 37.0 - 40.8 EER | 4.0 - 4.6 COP / 23.5 - 27.8 EER | 4.0 - 4.6 COP / 23.5 - 27.8 EER |
| | Full Load | 3.5 - 4.1 COP / 17.1 - 23.6 EER | 4.0 - 4.5 COP / 18.3 - 20.8 EER | 3.4 - 4.0 COP / 15.2 - 16.4 EER | 3.9 - 4.3 COP / 17.8 - 20.1 EER | 3.2 - 3.3 COP / 16.1 EER | 3.1 COP / 16.1 EER | 2.7 - 2.9 COP / 14.2 - 15.4 EER | 33.2 - 3.8 COP / 14.0 - 19.3 EER | 3.7 - 4.2 COP / 16.9 - 19.8 EER | 3.7 - 4.2 COP / 16.9 - 19.8 EER |
| Refrigerant | R-454B | R-454B | R-454B | R-454B | R-410A | R-454B | R-454B | R-454B | R-454B | R-454B | R-454B |
| Compressor | High-efficiency scroll (variable capacity) | High-efficiency scroll (dual capacity) | High-efficiency scroll (dual capacity) | High-efficiency scroll (dual capacity) | High-efficiency scroll (dual capacity) | Vapor injection scroll (single speed) | High-efficiency scroll (single speed) | Dual high-efficiency scroll (single speed) | High-efficiency (variable capacity) | High-efficiency scroll (dual capacity) | High-efficiency scroll (dual capacity) |
| Blower | Premium Variable speed ECM Oversized ECM (036 model only) | Variable speed ECM | 5-speed ECM | Variable speed ECM | Variable speed ECM | None | None | None | Variable speed ECM with W7B air handler | Variable speed ECM with W5B Air Handler. | Variable speed ECM with W5B Air Handler. |
| Cabinet Configurations | Vertical top, bottom or rear Horizontal end or side discharge All left or right return | Vertical top, bottom Horizontal end or side discharge All left or right return | Vertical top flow Horizontal side or end discharge All left or right return | Vertical top discharge All left or right return | Vertical top, bottom Horizontal end or side discharge All left or right return | Compact unit with front water connections Controls are field convertible from front to back | Compact unit with front water connections Controls are factory installed front or back | Compact unit with rear or top mounted water connections Controls are factory installed front or back | Compact unit | Compact unit | Compact outdoor unit |
| Stages *with auxiliary heat | Variable | 3 heat*, 2 cool | 3 heat*, 2 cool | 3 heat*, 2 cool | 3 heat*, 2 cool | 1 heat, 1 cool | 1 heat, 1 cool | 2 heat, 2 cool | Variable | 3 heat*, 2 cool | 3 heat*, 2 cool |
| Controls | Aurora Variable Speed Premium Controller with energy, refrigeration and performance monitoring standard Onboard diagnostics Symphony compatible | Aurora Advanced Controller with energy monitoring Optional Premium Controls with performance and refrigeration monitoring Onboard diagnostics Symphony compatible | Aurora Base Controller Symphony compatible | Aurora Premium Controller with energy, refrigeration and performance monitoring standard Onboard diagnostics Symphony and Aurora WebLink router required TPCC32U03 3D Thermostat/ Hydrostat required | Aurora Advanced Controller with energy & refrigeration monitoring (Standard) Onboard diagnostics Symphony compatible | Aurora Premium Controller with energy, refrigeration and performance monitoring standard Onboard diagnostics Symphony compatible | Aurora Advanced Controller with energy monitoring Optional Premium Controls with performance and refrigeration monitoring Onboard diagnostics Symphony compatible | Aurora Advanced Controller with energy monitoring Optional Premium Controls with performance and refrigeration monitoring Onboard diagnostics Symphony compatible | Aurora Variable Speed Controller with energy, performance and refrigeration monitoring standard Onboard diagnostics Symphony compatible | Aurora Advanced Controller with energy monitoring Optional Premium Controls with performance and refrigeration monitoring Onboard diagnostics Symphony compatible | Aurora Advanced Controller with energy monitoring Optional Premium Controls with performance and refrigeration monitoring Onboard diagnostics Symphony compatible |
| Air Coil | All-Aluminum PinnaCoil® | All-Aluminum PinnaCoil® | All-Aluminum PinnaCoil® | All-Aluminum PinnaCoil® | Indoor: All-Aluminum PinnaCoil® Outdoor: Copper Tube Aluminum Fin | N/A | N/A | N/A | All-Aluminum PinnaCoil® with W7B air handler | All-Aluminum PinnaCoil® with W5B Air Handler | All-Aluminum PinnaCoil® with W5B Air Handler |
| Desuperheater | Optional Internal mount pump | Optional Internal mount pump | Optional Internal mount pump | Optional External mount pump | Optional Internal mount pump | N/A | Optional internal mount pump (excl 024) | N/A | Optional Internal mount pump | Optional Internal mount pump | N/A |
| Auxiliary Heat | Optional Internal mount on vertical | Optional Internal mount on vertical | Optional Internal mount on vertical | Optional Internal mount on vertical | Optional Internal mount on vertical | N/A | N/A | N/A | Yes, with W7B Air Handler | Yes, with W5B Air Handler Dual fuel option | Yes, with W5B Air Handler Dual fuel option |
| Zone Control Option | IntelliZone2® (up to 6 zones) <i>Not available with OptiDry</i> | IntelliZone2® (up to 4 zones) | IntelliZone2® 24V (up to 4 zones) | N/A | IntelliZone2® (up to 4 zones) | N/A | N/A | N/A | IntelliZone2® (up to 6 zones) | IntelliZone2® (up to 4 zones) | IntelliZone2® (up to 4 zones) |
| ENERGY STAR Most Efficient 2025 <i>Closed earth loop rating points</i> | Yes—All sizes | Yes—All sizes | Yes—All sizes | Yes—All sizes | Yes— ASHP: 038 and 049 GSHP: 038, 049, and 064 | Yes—All sizes | Yes—All sizes | Yes—120 model | Yes—All sizes <i>*With W7B Air Handler</i> | Yes—All <i>*With W5B Air Handler or WaterFurnace A-Coil</i> | Yes—All sizes <i>*With W5B Air Handler or WaterFurnace A-Coil</i> |



The WaterFurnace name has been synonymous with geothermal since we were founded in 1983. Over the years we've worked to innovate new technologies, integrate key trends and grow our core business to represent clean and sustainable solutions. Our units combine sound engineering with the highest levels of quality control to provide you with some of the most efficient heating and cooling systems on the planet. WaterFurnace—***Smarter from the Ground Up.***

ISO Accreditations and Certifications:



visit us at waterfurnace.com



©2025 WaterFurnace International, Inc. WaterFurnace International, Inc., 9000 Conservation Way, Fort Wayne, IN 46809-9794. WaterFurnace has a policy of continual product research and development and reserves the right to change design and specifications without notice. ♻️ In an effort to minimize the environmental impact of this brochure, it was printed with a minimum of 10% post-consumer waste recycled paper.

BCMS-0032W 05/25